




Rêverie

CONTEMPORARY SURFACES

COMPACT



COLLECTION CATALOGUE

unicomstarker®

CONTEMPORARY SURFACES

Rêverie



unicomstarker®

Rêverie

COLLECTION

produzione - production
industriale - industrial

spessore - thickness
10 mm

usi - use
interni residenziali, bagni o locali commerciali e spazi pubblici - housing
environments, bathrooms or refined commercial locations as well as public
spaces.

formati - sizes
20x20



RÊVERIE
1



RÊVERIE
2



RÊVERIE
3



RÊVERIE
4



RÊVERIE
5



RÊVERIE
6



RÊVERIE
7



RÊVERIE
8



RÊVERIE
9



RÊVERIE
10



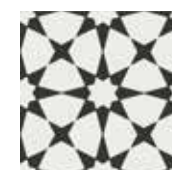
RÊVERIE
11



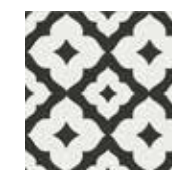
RÊVERIE
12



RÊVERIE
13



RÊVERIE
14



RÊVERIE
15



RÊVERIE
16



RÊVERIE
17



GEOMETRIC
TERRACOTTA



GEOMETRIC
ZAFFIRO



Rêverie

COLLECTION

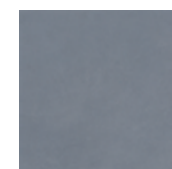
È il nuovo progetto ceramico di Unicomstarker che reinterpreta in chiave contemporanea le classiche cementine creando nuove soluzioni stilistiche e cromatiche.



RÊVERIE
BLANC



RÊVERIE
GRIS



RÊVERIE
BLEU



RÊVERIE
NOIR

This Rêverie collection is the new project from Unicomstarker, that reinterprets the classic and contemporary cementine, creating a new style in chromatic colours.

RÉVERIE DÉCOR 8
20x20 8"x8"

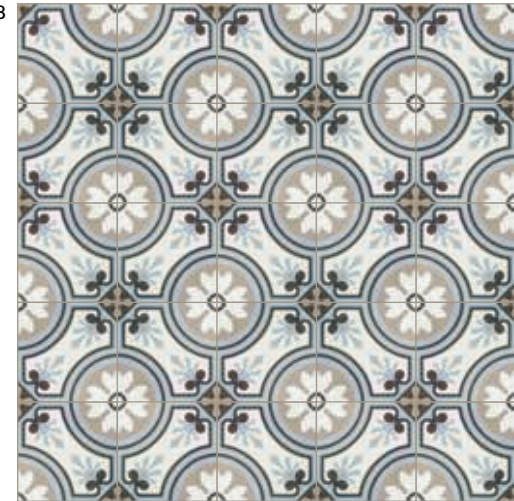
RÉVERIE GRIS
20x20 8"x8"





SET 01
kitchen

DÉCOR 8



GRIS



RÉVERIE
DÉCOR 8 - GRIS

20 x 20
8" x 8"

12

UNICOMSTARKER
CONTEMPORARY SURFACES

RÉVERIE DÉCOR 2
20x20 8"x8"

RÉVERIE BLANC
20x20 8"x8"

13

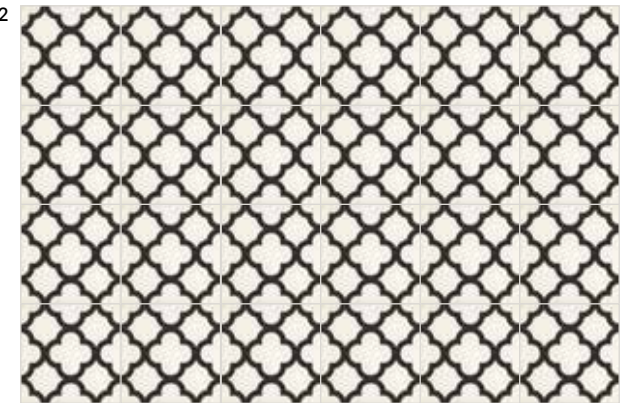
Réverie



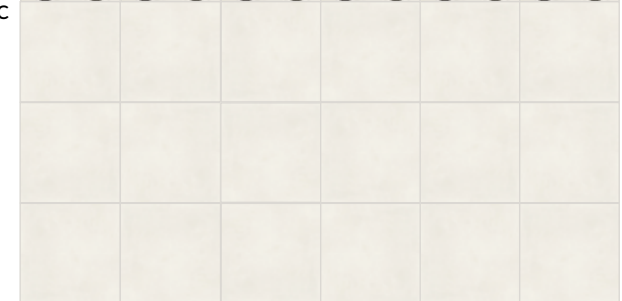


SET 02
bathroom

DÉCOR 2



BLANC



RÊVERIE
DÉCOR 2 - BLANC

20 x 20
8" x 8"

16

UNICOMSTARKER
CONTEMPORARY SURFACES



RÊVERIE
DÉCOR 1 - NOIR

20 x 20
8" x 8"

17

Rêverie



18

UNICOMSTARKER
CONTEMPORARY SURFACES

RÊVERIE DÉCOR 1 - 2 - 3
20 x 20 8" x 8"

ESSENCE VANILLA
20 x 120 8" x 48"



19

RÊVERIE





SET 03
restaurant

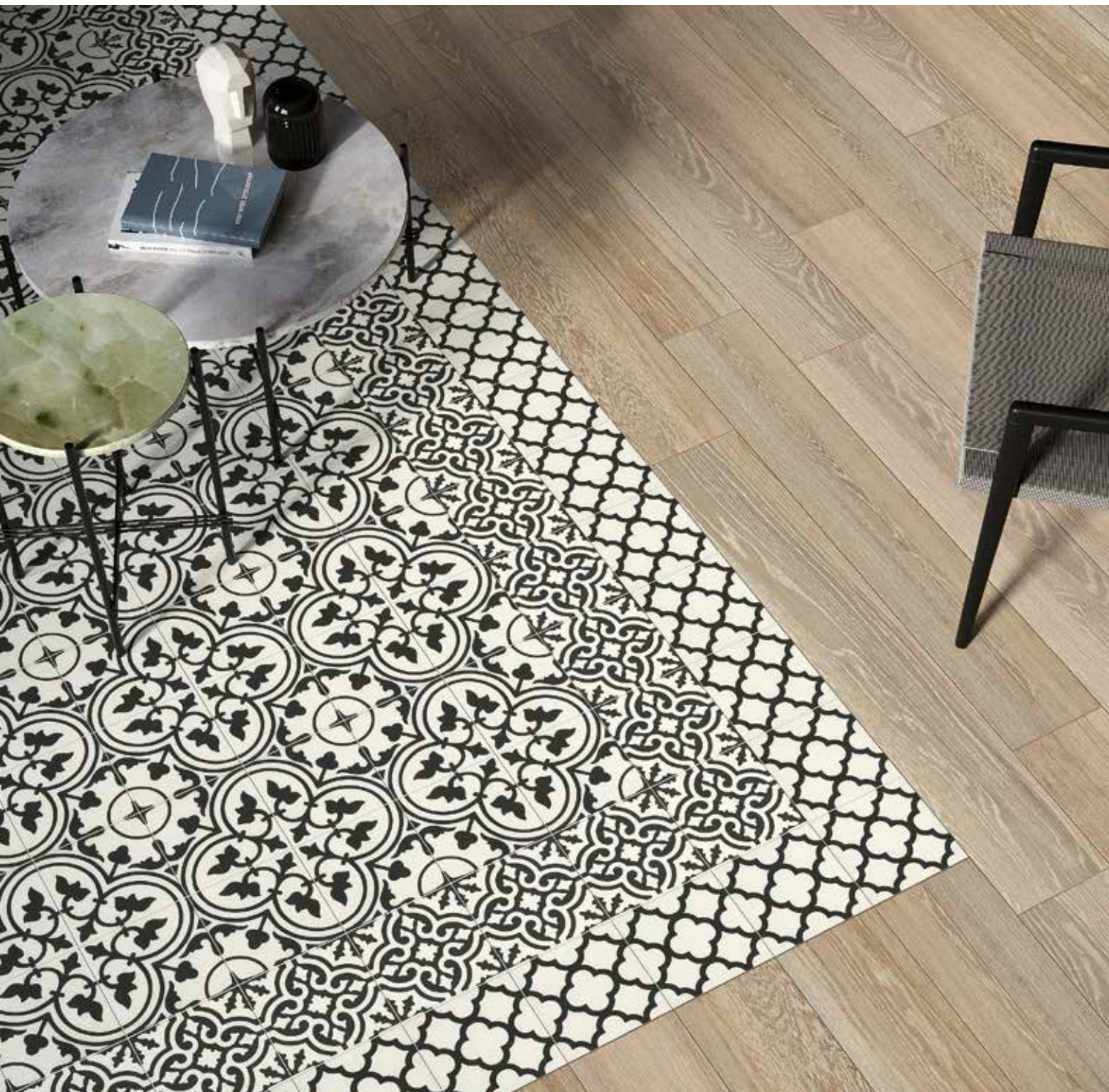
DÉCOR 13



RÊVERIE
DÉCOR 13

20 x 20
8" x 8"





SET 04

living

DÉCOR 1 DÉCOR 3 DÉCOR 2

ESSENCE_vanilla



RÊVERIE
DÉCOR 1 - 2 - 3



ESSENCE COLLECTION
VANILLA

20 x 20
8" x 8"

20 x 120
8" x 48"

26

UNICOMSTARKER
CONTEMPORARY SURFACES

RÊVERIE DÉCOR II
20x20 8"x8"

RÊVERIE GRIS
20x20 8"x8"



27

Rêverie

SET 05 *hallway*

GRIS



DÉCOR 11



RÊVERIE
DÉCOR II - GRIS

20x20
8"x8"

28

UNICOMSTARKER
CONTEMPORARY SURFACES

RÉVERIE DÉCOR II
20x20 8"x8"

RÉVERIE GRIS
20x20 8"x8"



29

Réverie

RÉVERIE DÉCOR 4 - 5
20x20 8"x8"

RÉVERIE GRIS
20x20 8"x8"





SET 06

studio

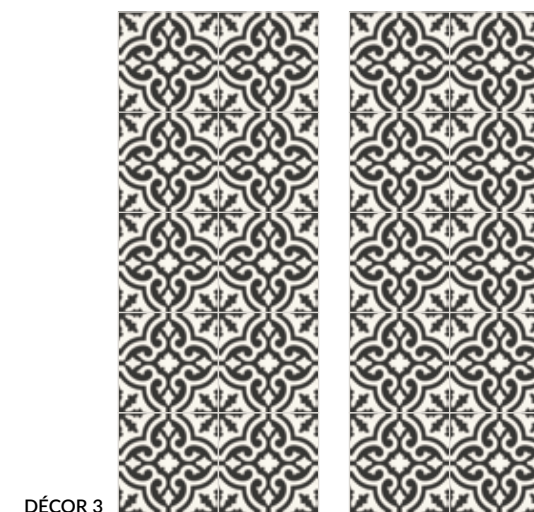


RÉVERIE
DÉCOR 4 - 5 - GRIS

20 x 20
8" x 8"



SET 07
hallway



DÉCOR 3



GRIS

RÊVERIE
DÉCOR 3 - GRIS

20 x 20
8" x 8"

RÉVERIE DÉCOR 3
20x20 8"x8"

RÉVERIE BLANC
20x20 8"x8"





SET 08

shop

DÉCOR 10



DÉCOR 12



ESSENCE_vanilla

RÊVERIE
DÉCOR 10 - 12

20 x 20
8" x 8"

+

ESSENCE COLLECTION
VANILLA

20 x 120
8" x 48"



SET 09
living

D COR 10



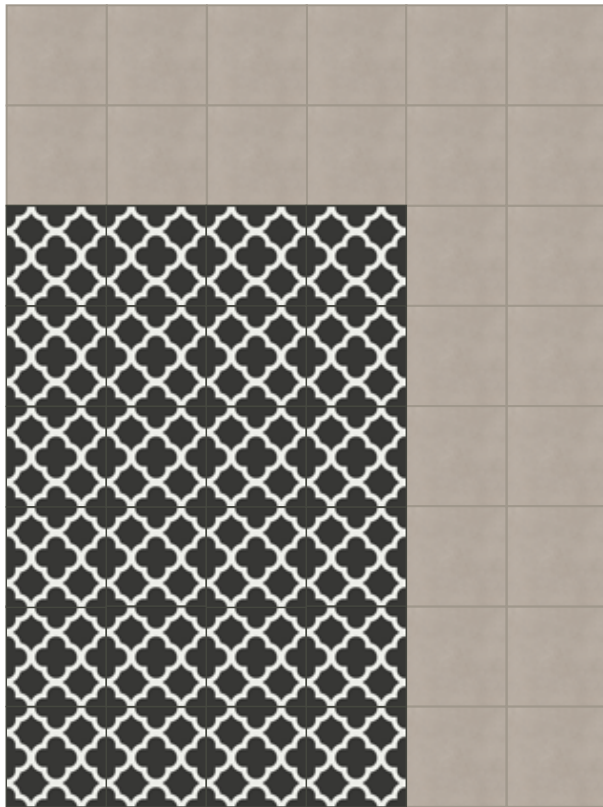
D COR 9

R VERIE
D COR 9 - 1020 x 20
8" x 8"



SET 10
living

GRIS



DÉCOR 17

RÊVERIE
GRIS + DÉCOR 17

20 x 20
8" x 8"





SET II

museum

BLANC



ESSENCE_vanilla

DÉCOR 16

ESSENCE COLLECTION
VANILLA

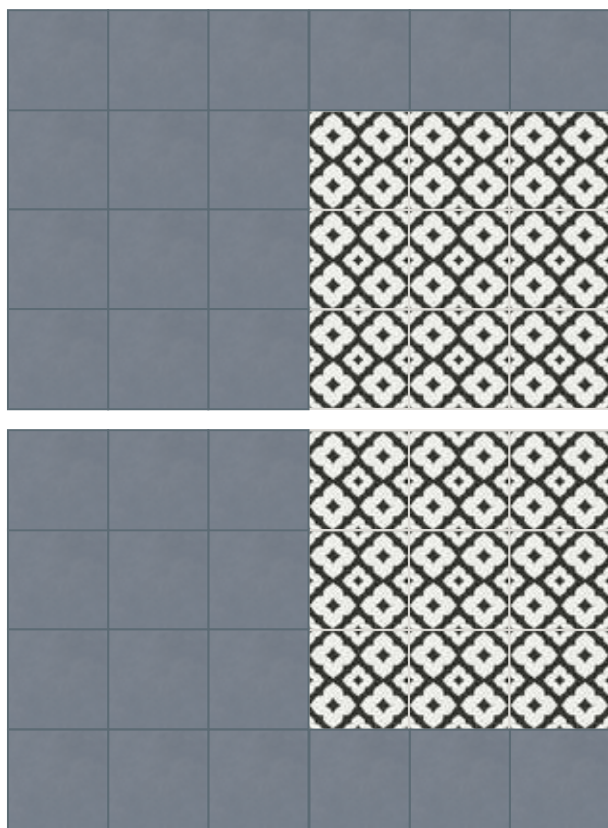


RÊVERIE
BLANC + DÉCOR 16

20 x 120
8" x 48"

20 x 20
8" x 8"

SET 12 *kitchen*



BLEU

DÉCOR 15

RÊVERIE
BLEU + DÉCOR 15

20 x 20
8" x 8"



RÊVERIE DÉCOR 15
20x20 8"x8"

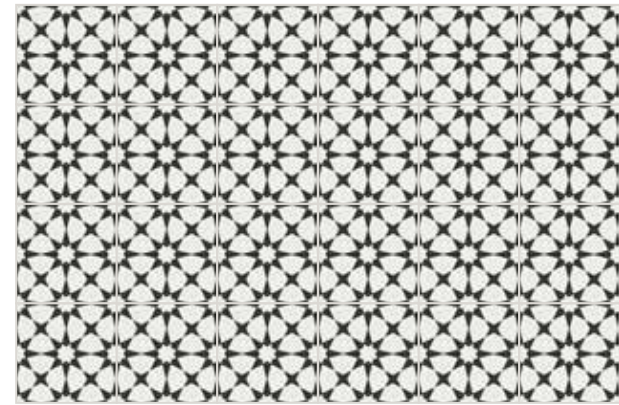
RÊVERIE BLANC
20x20 8"x8"





SET 13
bathroom

DÉCOR 14



NOIR



RÊVERIE
NOIR + DÉCOR 14

20 x 20
8" x 8"



Un caleidoscopio di grafiche e colori,
adatte a qualunque stile abitativo,
dal rigoroso bianco e nero, ai toni più
accesi dell'ocra, alle preziose sfumature
del blu carta da zucchero.

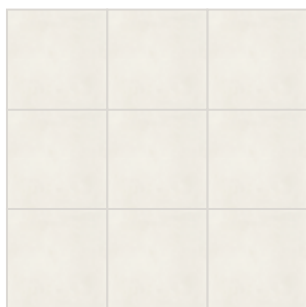
A Kaleidoscope of graphics and colours,
which is suitable for whatever housing
style, from the rigorous black & white, the
vibrant tones of the ochre to the precious
tones of the blue sugar paper.

Disponibili nel classico formato 20x20, Rêverie décor presenta 12 diversi soggetti utilizzabili per la posa a soggetto unico oppure accostabili in soluzioni originali e dal forte impatto decorativo, grazie alla loro varietà grafica e cromatica.

Rêverie blanc, gris, bleu e noir, completano la collezione, creando soluzioni composite più sofisticate ed eleganti.

Available in the classic size of 20 x 20, the Reverie decors present 12 various subjects to utilize as a single subject, or be laid in a variety of a combination of solutions, from a strong effect to a variety of designs and tones.

Reverie blanc, gris, bleu and noir complete the collection, combining a mix of solutions, sophisticated and elegant.

RÊVERIE
BLANCRÊVERIE
BLEURÊVERIE
GRISRÊVERIE
NOIR

Rêverie

Rêverie

DÉCOR



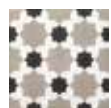
RÊVERIE
1



RÊVERIE
2



RÊVERIE
3



RÊVERIE
4



RÊVERIE
5

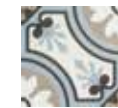


RÊVERIE
6





RÊVERIE
7



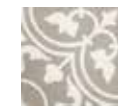
RÊVERIE
8



RÊVERIE
9



RÊVERIE
10



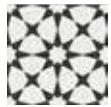
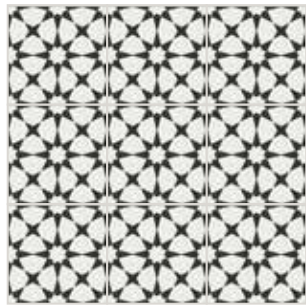
RÊVERIE
11



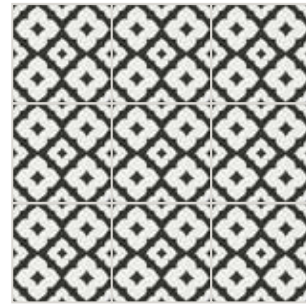
RÊVERIE
12



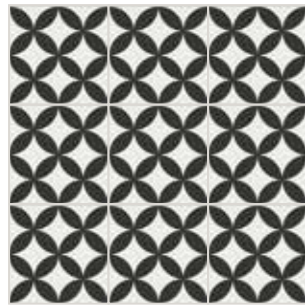
RÊVERIE
13



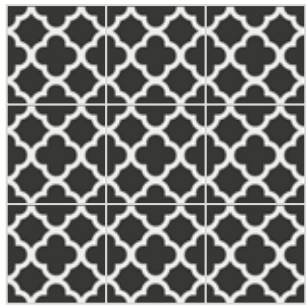
RÊVERIE
14



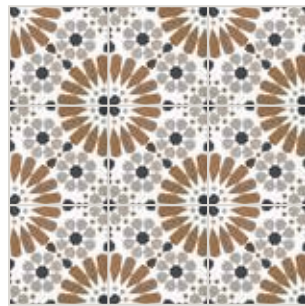
RÊVERIE
15



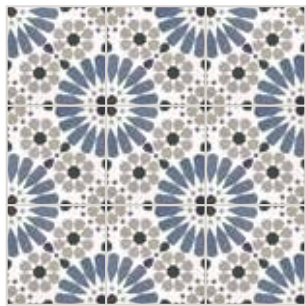
RÊVERIE
16



RÊVERIE
17



geometric
terracotta



geometric
zaffiro





TECHNICAL INFORMATION & PLUS



DÉCOR
RETTIFICATO

20x20
8"x8"

79



GEOMETRIC
RETTIFICATO

20x20
8"x8"

79



FONDO
RETTIFICATO

20x20
8"x8"

75

CARATTERISTICHE TECNICHE

TECHNICAL FEATURES CARATERISTIQUES TECHNIQUES TECHNISCHE EIGENSCHAFTEN



ISO 10545-3

assorbimento d'acqua
water absorption

< 0,5%



ISO 10545-4

resistenza alla flessione
breaking strength

35 N/mm²



ISO 10545-13

resistenza agli acidi
resistance to acid

GLA



ISO 10545-12

resistenza al gelo
frost resistance

resiste
frost proof



ISO 10545-14

resistenza alle macchie
stain resistance

4



variazioni cromatiche
color shade variations

V2 var. leggera
V2 slight var.



ISO 10545-2

planarità
surface flatness

± 0,5%



spessore
thickness

10 mm

NATURALE



DIN51097
DIN51130

coefficiente d'attrito (scivolosità)
dynamic coefficient of friction (slipperiness)

A+B+C
R10

ANSI A 137.1
DCOF BOT 3000 E

> 0.42

DÉCOR



DIN51097
DIN51130

coefficiente d'attrito (scivolosità)
dynamic coefficient of friction (slipperiness)

A+B
R10

ANSI A 137.1
DCOF BOT 3000 E

> 0.42



ortogonalità
orthogonality

± 0.6%

IMBALLI

PACKING EMBALLAGES VERPACKUNG

formato size		spessore thickness	pezzi/sc pcs/box	mq/sc sqm/box	kg/sc kgs/box	sc/pl box/pal	mq/pl sqm/pal	kg/pl kgs/pal
20x20	fondo rettificato	10	16	0.64	13.51	72	46.08	972.72
20x20	décor rettificato	10	16	0.64	13.51	72	46.08	972.72
20x20	geometric	10	16	0.64	12.96	72	46.08	933.12



UNICOMSTARKER AND

green 

italiano

L'azienda è impegnata nella continua innovazione tecnologica dei propri processi per realizzare prodotti sempre più rispondenti alle richieste del mercato e nell'ottica di:

- riduzione del consumo energetico dei processi di produzione;
- riduzione delle emissioni nell'aria e nell'acqua;
- miglioramento dell'informazione al consumatore e della gestione dei rifiuti.

Per limitare il proprio impatto ambientale UNICOMSTARKER si preoccupa che:

- gli scarti di lavorazione sono completamente gestiti e riutilizzati;
- tutti gli stabilimenti produttivi sono dotati di impianto di depurazione delle acque a circuito chiuso con recupero totale degli scarichi idrici provenienti dal ciclo produttivo e nessuno scarico in ambiente;
- le emissioni gassose sono autorizzate dall'autorità competente, dotate di impianti per l'abbattimento degli inquinanti e sottoposte a controllo periodico per verifica del rispetto della legislazione vigente;
- i rifiuti industriali sono smaltiti in conformità alle direttive comunitarie;
- gli imballaggi sono destinati al recupero e riutilizzo;
- l'impatto acustico nell'ambiente è attenuato con l'utilizzo di tecnologie idonee.

Le piastrelle ceramiche prodotte sono:

- un prodotto con una lunga durata di vita
- riciclabili al termine dell'utilizzo

english

The company is committed to the continued technological innovation of its processes to create products that increasingly meet the demands of the market and focus on:

- reduced energy consumption in production processes;
- reduced emissions into the air and water;
- improving consumer awareness and waste management.

To curb its environmental impact, UNICOMSTARKER has taken the following steps:

- manufacturing rejects are fully managed and reused;
- all the production units are equipped with a closed-circuit water purification plant with total recovery of liquid discharges coming from the production cycle and no discharges into the environment;
- emissions of gases are authorised by the competent authority, pollutant abatement systems are fitted and undergo periodic checks to verify they comply with the current laws;
- industrial waste is disposed of in compliance with the community directives;
- packaging is sent off to be recycled and reused;
- the acoustic impact on the environment is toned down via the use of suitable technologies.

The ceramic tiles produced are:

- a long-lasting product
- recyclable at the end of their use

**UNICOMSTARKER RÉVERIE COLLECTION
IS A UNICOMSTARKER'S PROJECT**

CONTACTS

UNICOM SRL

via flumendosa 7
41042 fiorano modenese
modena italy
T +39 (0)536 926011
unicomstarker.com

UNICOMSTARKER SHOWROOM

via flumendosa 7
41042 fiorano modenese
modena italy



Quanto contenuto nel catalogo è indicativo e non esaustivo riguardo a grafiche, decori, colori, imballi e dimensioni.

The content of this catalogue is only indicative and not exhaustive in respect of graphics, decorations, colours, packaging and sizes.

Le contenu de notre catalogue concernant les decors, coloris, graphiques, emballage et dimensions est indicatif.

Was im Katalog enthalten ist, ist ein Hinweis und nicht erschöpfend in Bezug auf Grafiken, Dekorationen, Farben, Verpackung und Abmessungen.

think
outside
the box

